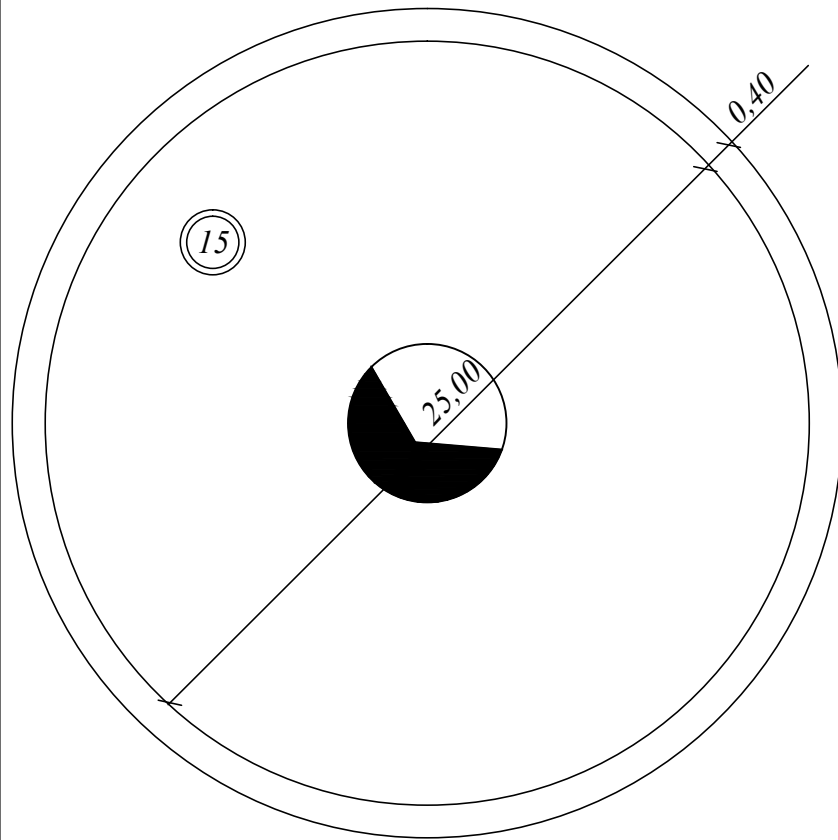
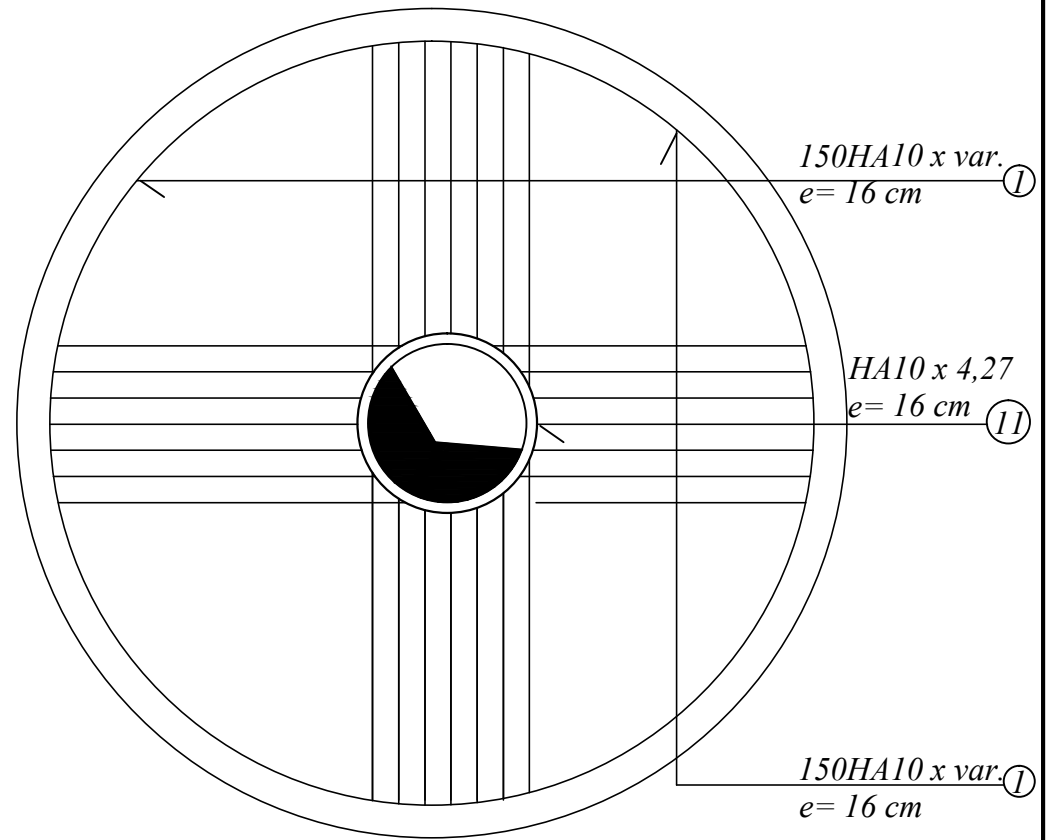


*Plans et coupes réservoirs de 2000m<sup>3</sup>*

*Coffrage coupole*

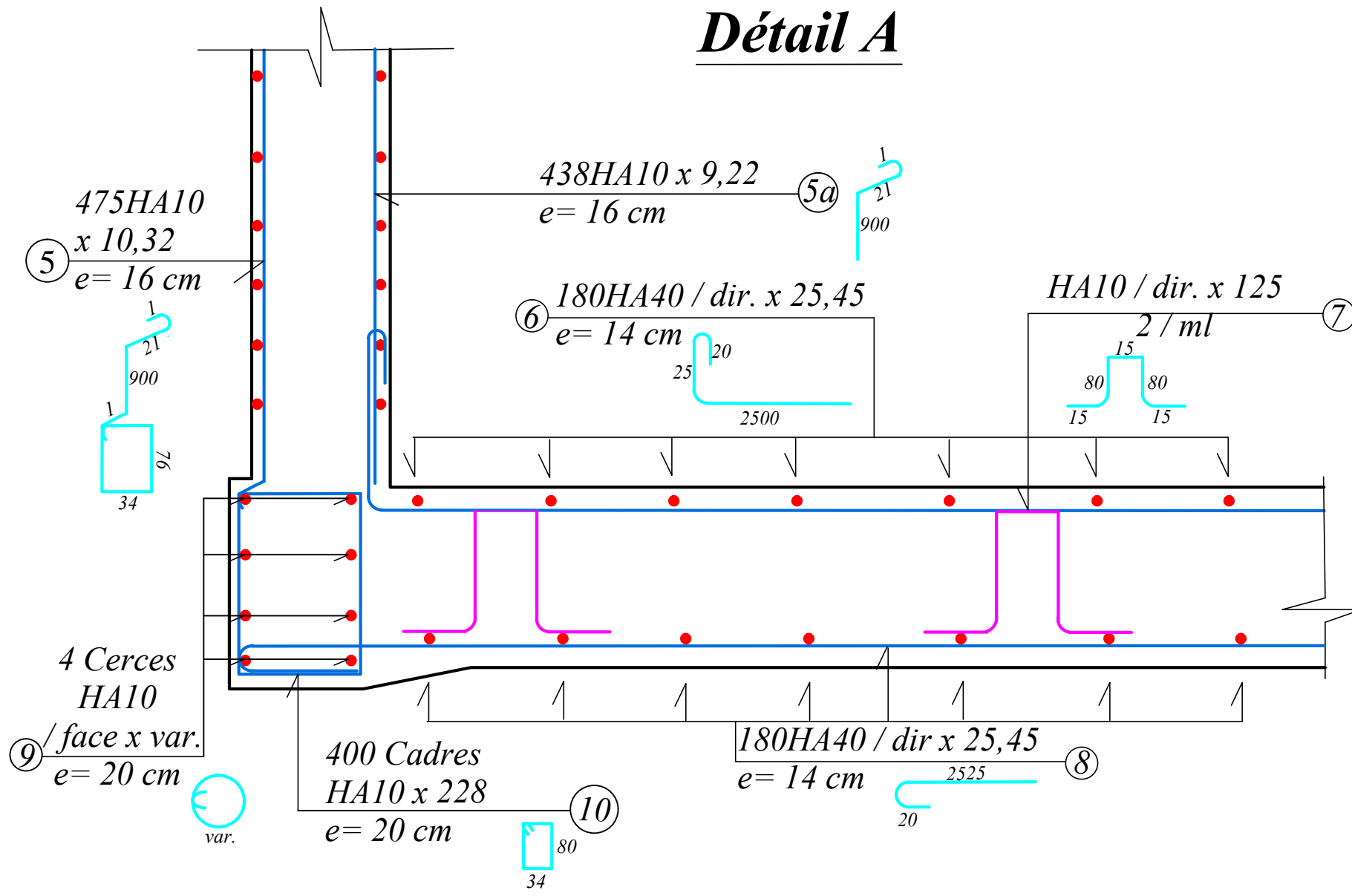


*Ferrailage coupole*

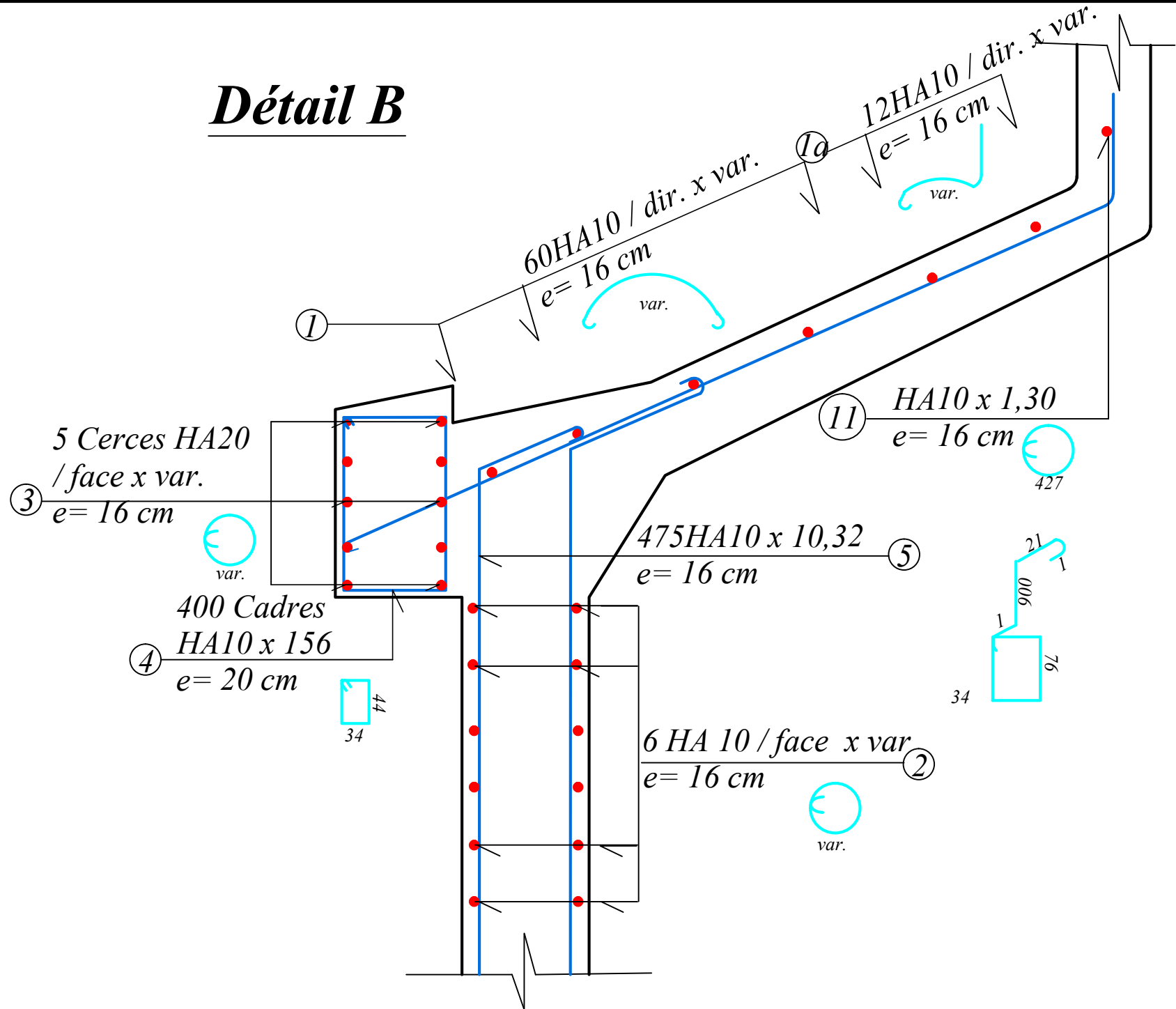


*Plan de ferrallage et coffrage de la coupole supérieure*

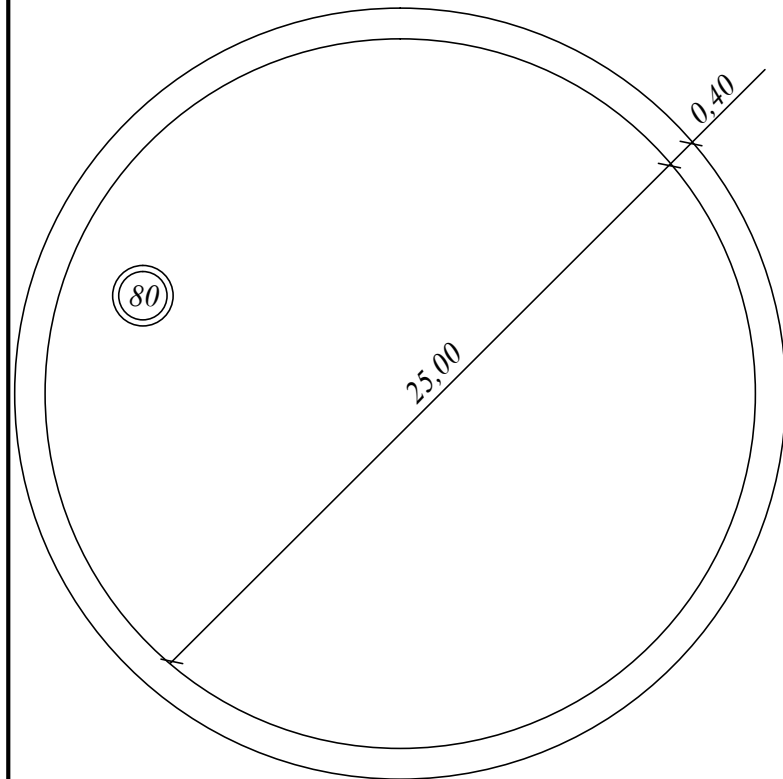
# Détail A



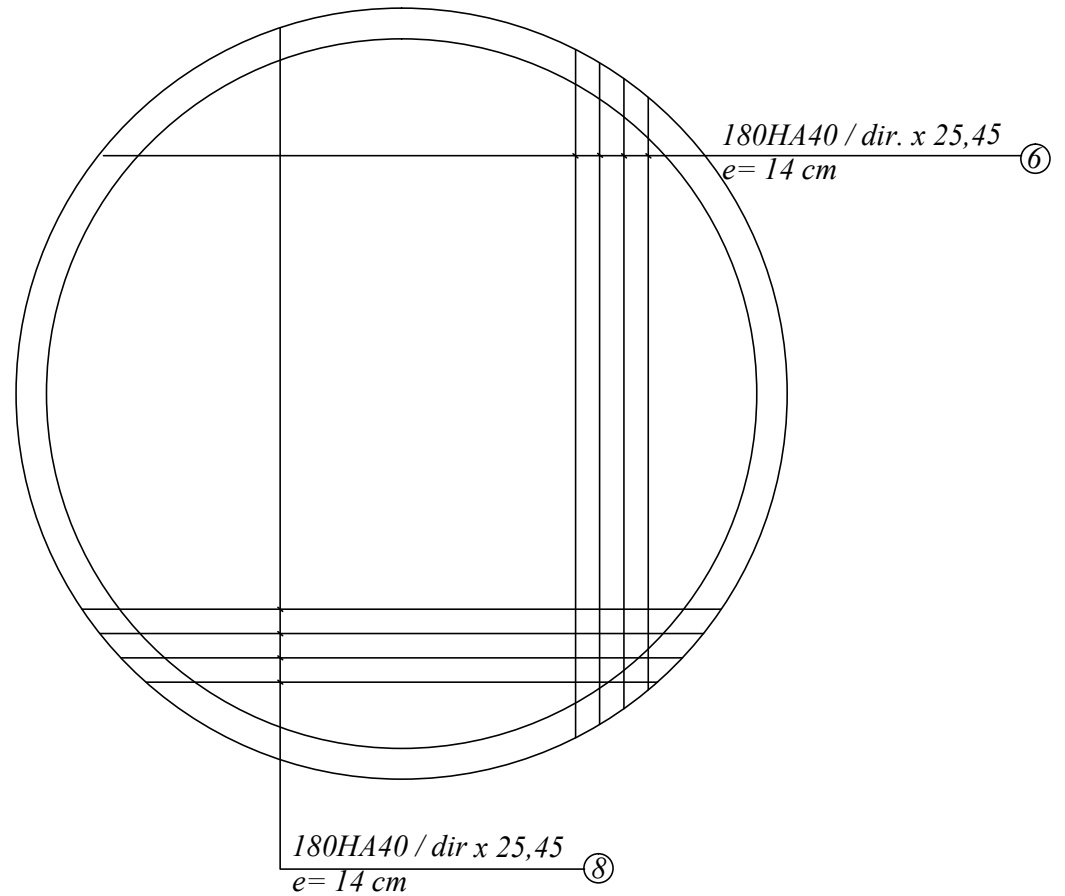
# Détail B







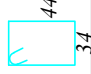

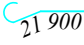

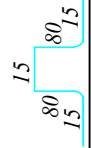




*Coffrage dalle de fond*



*Ferrailage dalle de fond*



*Plan de ferrillage et coffrage de la dalle de fond*

NOMENCLATURE						
N°	TYPE	Φ	NOMBRE	LONG. UNITAIRE	FAÇONNAGE	LONG. TOTALE
1	HA	10	264	39,5640		10560
1a	HA	10	48	20		960
2	HA	10	108	int : 78,5 ext : 79,12		int : 4239 ext : 4272
3	HA	20	10	int : 78,5 ext : 79,44		int : 397,5 ext : 397,2
4	HA	10	156	0,78		121,68
5	HA	10	475	10,32		4906,75
5a	HA	10	438	9,22		4038,36
6	HA	40	360	25,45		9162
7	HA	10	2500	2,05		5125
8	HA	40	360	25,45		9162
9	HA	10	8	int : 78,5 ext : 79,44		int : 314 ext : 317,6
10	HA	10	396	2,28		902,88
11	HA	10	1	4,27		5,2
RECAPITULATIF DES ACIERS						
HA			10		20	40
MASSE (kg/ml)			0,616		2,466	9,864
LONG. (ml)			521530,88		794,47	18324
MASSE (kg)			321263,022		1959,73	180747,936
<b>MASSE TOTALE = 503970,6881 (kg)</b>						